

KEEPSAFE™

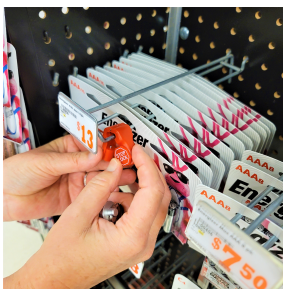
STOP LOCKS & PORTABLE DETACHER

TO ATTACH:

1. Remove the first two items from the peg hook and set aside. Open the stop lock using the portable detacher



2. Position the stop lock around the peg hook. Close it by pinching it together until it clicks. On double peg hooks, position it on one side.



3. Put the items you removed back on the peg hook in front of the stop lock. This allows customers to shop without associate assistance.



4. To remove or reposition stop locks, use the portable detacher.



Note, as items are sold, the stop locks must be repositioned to ensure there are items in front of them available to customers.

Stop locks are to be used on all AA and AAA batteries, and multi-pack lighters.





Keepsafe™ Stop lock



Stop lock (6mm) Item # 287013

Stop lock detacher Item # 750123

